

FACT SHEET

INTERIOR TRIM AND SEAT UPHOLSTERY



Seat upholstery and interior trim level for Volvo FH

The interior offers a modern colour scheme and matches the various parts of the interior trim. With its various shades and matching colours, it creates a perception of high quality. There are several different interior trim levels to choose from; soft plush, textile and leather. With a variety of colours on curtains, bunk and wall panels.

Sales variants

- UPHTRI21** Vinyl and textile interior trim level - Robust
- UPHTRI22** Textile interior trim level – Dynamic
- UPHTRI23** Soft plush interior trim level – Progressive
- UPHTRI25** Leather interior trim level – Robust
- UPHTRI26** Leather interior trim level – Dynamic
- UPHTRI27** Leather interior trim level – Progressive



DRIVER APPEAL

- Durable materials of high quality.
- Gives a high-class impression and a luxurious atmosphere.
- Matching colour scheme.
- Easy to clean (leather interior trim).

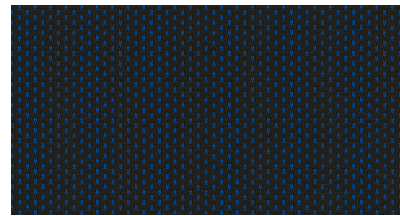
FACT SHEET

INTERIOR TRIM AND SEAT UPHOLSTERY

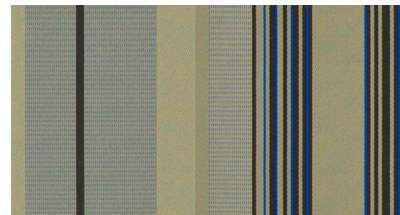


UPHTRI21 Vinyl and textile interior trim level – Robust

- Headlining in grey vinyl for sleeper cabs and non-woven material in light grey for High Sleeper cabs.
- Bunk upholstery in dotted dark grey.
- Blackout curtains in dark grey with thin blue and black-lines
- Wall panels in a midgrey vinyl.
- Seat insert in blue textile.
- Bolster in vinyl, Raven (dark grey).
- Side insert in blue vinyl with blue and Raven seam.



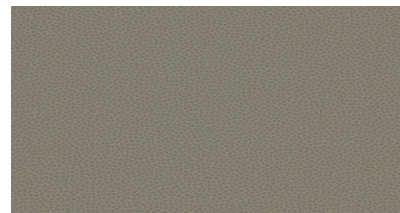
Bunk.



Curtains.



Seat upholstery.



Wall panels.

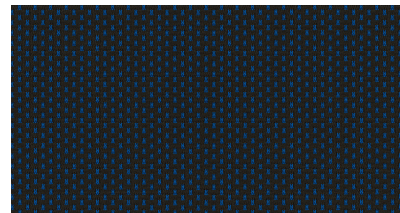
FACT SHEET

INTERIOR TRIM AND SEAT UPHOLSTERY

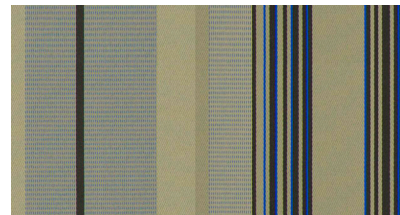


UPHTRI22 Textile interior trim level - Dynamic

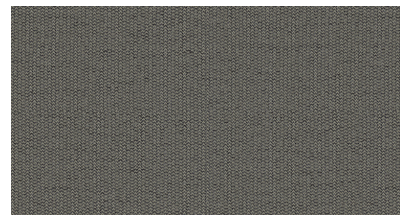
- Headlining in a non-woven material and light grey.
- Bunk upholstery in dotted dark grey.
- Blackout curtains in dark grey with thin blue and black-lines.
- Wall panels in a midgrey textile.
- Seat insert in blue textile.
- Bolster in blue textile.
- Side insert in dark blue vinyl with Raven (dark grey) seam.



Bunk.



Curtains.



Wall panels.



Seat upholstery.

FACT SHEET

INTERIOR TRIM AND SEAT UPHOLSTERY

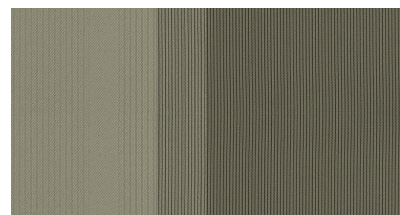


UPHTRI23 Soft plush interior trim level - Progressive

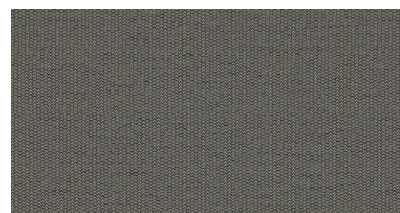
- Headlining in a non-woven material and light grey.
- Bunk upholstery in mixed beige shades.
- Blackout curtains in a striped design and in midgrey.
- Wall panels in a midgrey textile.
- Seat insert in plush, Skylark.
- Bolster in plush, Skylark.
- Side insert in vinyl Raven (dark grey), with Skylark seam.



Bunk.



Curtains.



Wall panels.



Seat upholstery.

FACT SHEET

INTERIOR TRIM AND SEAT UPHOLSTERY

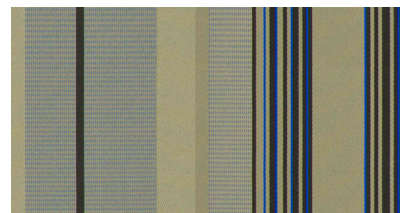


UPHTRI25 Leather interior trim level - Robust

- Headlining in a grey vinyl for sleeper cabs and non-woven material in light grey for High Sleeper cabs.
- Bunk upholstery in dotted dark grey.
- Blackout curtains in dark grey with thin blue and black-lines.
- Wall panels in a midgrey vinyl.
- Seat insert in leather, Skylark (beige).
- Bolster in leather, Raven (dark grey).



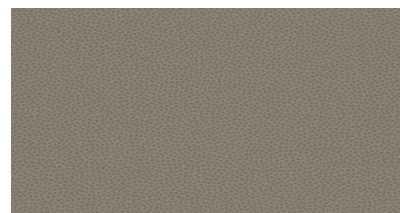
Bunk.



Curtains.



Seat upholstery.



Wall panels.

FACT SHEET

INTERIOR TRIM AND SEAT UPHOLSTERY

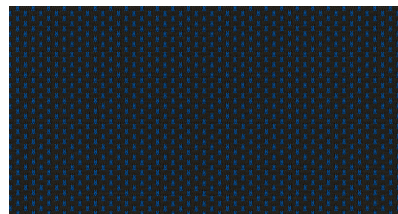


UPHTRI26 Leather interior trim level - Dynamic

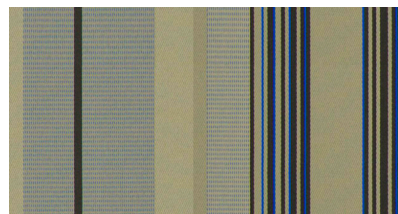
- Headlining in a non-woven material and light grey.
- Bunk upholstery in dotted dark grey.
- Blackout curtains in dark grey with thin blue and black-lines.
- Wall panels in a midgrey textile.
- Seat insert in leather, Skylark (beige).
- Bolster in leather, Raven (dark grey).



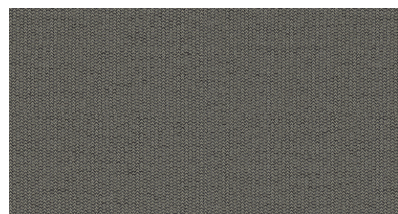
Seat upholstery.



Bunk.



Curtains.



Wall panels.

FACT SHEET

INTERIOR TRIM AND SEAT UPHOLSTERY

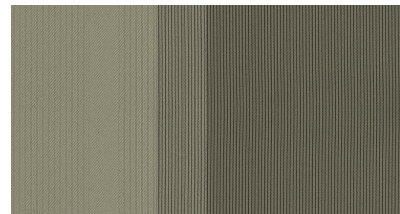


UPHTRI27 Leather interior trim level - Progressive

- Headlining in a non-woven material and in light grey.
- Bunk upholstery in mixed beige shades.
- Blackout curtains in a striped design and in midgrey.
- Wall panels in a midgrey textile.
- Seat insert in leather, Skylark.
- Bolster in leather, Raven (dark grey).



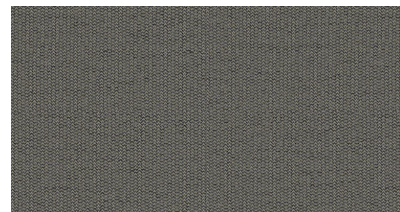
Bunk.



Curtains.



Seat upholstery.



Wall panels.