

FACT SHEET

RIM MATERIAL AND TYPE



Aluminium rim

The aluminium rims offer good comfort due to precise concentricity while at the same time cutting tyre wear. It has a low weight, almost half of a steel rim, saving valuable load capacity. Thanks to the better heat dissipation of aluminium, life time of brakes and tyres are increased. The aluminium rims also give the truck a stylish appearance.

FEATURES AND BENEFITS

- Increased payload capacity thanks to lower weight.
- Reduced energy consumption thanks to lower weight.
- Stylish appearance and enhanced image.
- Increased strength and durability.
- 100% recyclable.

Steel rim

A steel rim is very durable, especially when the road conditions are snowy or muddy. Steel rims offer excellent durability against all kinds of off-road abuse and road conditions that are snowy or muddy. They have very good resistance against dirt, sand and brake depletion. Additionally, steel is very malleable, preventing chipping or breakage due to impact.

FEATURES AND BENEFITS

- Very durable.
- Good resistance against dirt, sand and brake depletion.
- Very malleable.

FACT SHEET

RIM MATERIAL AND TYPE

Aluminium rims Dura-Bright® EVO

Dura-Bright® EVO is not a coating but a surface treatment that penetrates the aluminium for easy maintenance. These rims do not need polishing. Regular washing with a mild detergent and a soft brush will keep them shiny.

Important: Do not use strong acids, strong alkaline products or abrasive brushes. The pH level should be from 2 through 12 in diluted/ready to use state.



Dura-Bright® EVO.

Aluminium rims LvL ONE®

The LvL ONE® aluminium rim offers the advantages of aluminium rims and has a smooth and glossy surface.

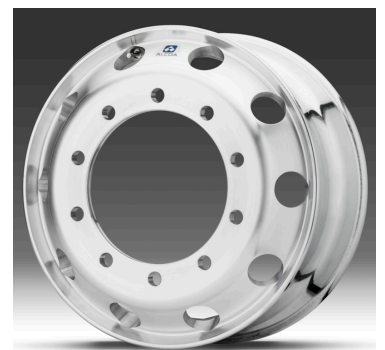


LvL ONE®.

Brushed aluminium rims

The brushed aluminium rim offers the advantages of aluminium rims and has a satin-finished surface.

This is the most economical finish.



Brushed.

Steel rims

Available for every specification.

FACT SHEET

RIM MATERIAL AND TYPE

Sales variants

Dura-Bright® EVO aluminium rims

RT-ALDP Rim type Dura-Bright® EVO aluminium, standard holes*

RT-ALDPD Rim type Dura-Bright® EVO aluminium, dual holes**

LvL ONE® aluminium rims

RT-AL1 Rim type LvL ONE® aluminium, standard holes*

RT-AL1DU Rim type LvL ONE® aluminium, dual holes**

Brushed aluminium rims

RT-AL¹ Rim type brushed aluminium, standard holes*

RT-ALDU Rim type brushed aluminium, dual holes**

Steel rims

RT-STEEL² Rim type steel

* Standard holes: long wheel stud fixing.

** Dual holes: Countersunk holes, short wheel stud fixing.

¹ Standard on an electric truck.

² Standard on a diesel/gas-powered truck.

FACT SHEET

RIM MATERIAL AND TYPE



Low weight

The weight of the aluminium rim is almost half, compared to the steel rim. On a 4x2 tractor, saving is approximately 150 kg.



Strength

The aluminium rims are forged from one piece of aluminium, without welds. They are corrosion-resistant and durable. For maximum load capacity, see table below.



Style

The aluminium rims give the truck a stylish appearance and come in three finishes: Brushed, Polished and Dura-Bright® EVO.



Single or dual holes

Dual holes provide countersunk holes, meaning that the same short studs used on steel rims can be used. You will be able to change from steel to aluminum wheels (or vice versa) without also changing studs. The single-hole rims (26 mm) require longer studs.



Material properties

The aluminium rims are 100% recyclable. Aluminium rims provide efficient heat dissipation that has a positive influence on the durability of the brake components and hubs.

Size	22.5"		
Width	8.25"	9.00"	11.75"
Weight per rim (kg)	23.1	23.5	24.8
Maximum load capacity (kg)	3750	4125	5000